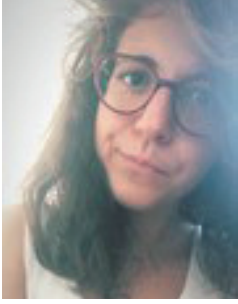


PhD Program in Biomedical Sciences

Students 2020-2021 | XXXVI cycle



Roberta Andreotti

roberta.andreotti@studenti.unipd.it

Research line: Role of peripheral tissues in neurodegenerative diseases

Supervisor: Prof. Maria Pennuto
Co-Tutor: Dr. Emanuela Zuccaro



Aravamudhan Aishwarya

aishwarya.aravamudhan(at)studenti.unipd.it

Research line: Study of the pathophysiology of a potassium channel in neurodegenerative diseases

Supervisor: Prof. Maria Pennuto

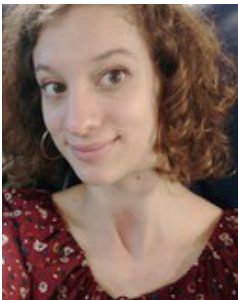


Bevilacqua Martina

martina.bevilacqua@studenti.unipd.it

Research line: Study of the pathophysiology of a potassium channel in neurodegenerative diseases

Supervisor: Prof. Maria Pennuto

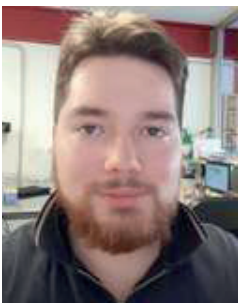


Cesare Elisa

elisa.cesare@studenti.unipd.it

Research line: Rapid and cost-effective production of patient-specific neural organoids

Supervisor: prof. Nicola Elvassore
Co Supervisor: Prof. Matteo Caleo

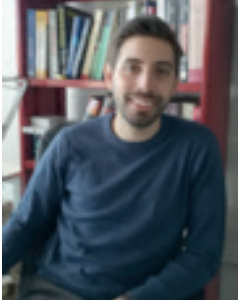


Covallero Alberto

alberto.covallero.1@studenti.unipd.it

Research line: Exploring the physiopathology of single and multiple organelle contact sites with novel genetically encoded reporters

Supervisor: prof. Tito Cali



D'Angelo Donato

donato.dangelo.1@studenti.unipd.it

Research line: Study of mitochondrial calcium homeostasis in skeletal muscle physiopathology

Supervisor: prof. Anna Raffaello
Co Supervisor: prof. Rosario Rizzuto



Greco Nicola

nicola.greco(at)studenti.unipd.it

Research line: Heparanase as key regulator of EMT and stemness in Breast Cancer

Supervisor: prof. Maurizio Onisto



Quezada Meza Camila Paz

camilapaz.quezadameza@studenti.unipd.it

Research line: Targeting protein kinase CK2 as a multipotential anti-cancer strategy

Supervisor: prof. Maria Ruzzene



Rossini Michela

michela.rossini(at)phd.unipd.it

Research line: Inter-organelle contact determination in physiological and pathological conditions

Supervisor: prof. Paola Pizzo
Co Supervisor: dr. Riccardo Filadi



Sarto Fabio

fabio.sarto.2(at)phd.unipd.it

Research line: Neuromuscular plasticity with aging, disuse and reduced physical activity

Supervisor: Prof. Marco Narici
Co supervisor: Dott. Martino Franchi

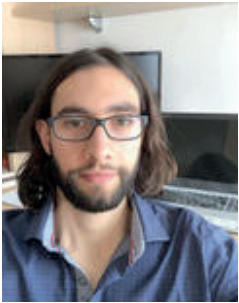


Scantamburlo Francesca

francesca.scantamburlo@studenti.unipd.it

Research line: The immunometabolism of NF1-related tumors

Supervisor: prof. Andrea Rasola



Valli Giacomo

giacomo.valli(at)phd.unipd.it

Research line: Type 1 diabetes, exercise and muscle health

Supervisor: prof. Giuseppe De Vito

Co Supervisor: prof. Marco Narici



Vignozzi Livia

livia.vignozzi@studenti.unipd.it

Research line: Neuronal and astroglial plasticity after stroke in rodent models

Supervisor: prof. Matteo Caleo

Co Supervisor: dr. Gabriele Losi, dr. Marco Pirazzini