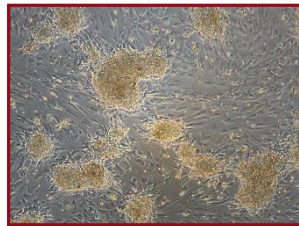


## FONTI di CELLULE STAMINALI MESENCHIMALI ADULTE



tessuto adiposo

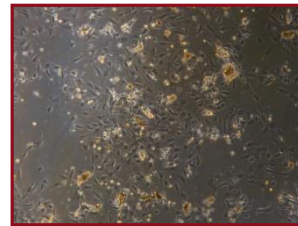


**ADSCs**

*adipose-derived stem cells*



polpa dentale

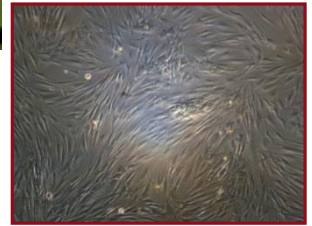


**DPSCs**

*dental-pulp stem cells*



pelle



**SKPs**

*skin-derived precursors*

## APPLICAZIONI di CELLULE STAMINALI ADULTE e BIOMATERIALI

### RIGENERAZIONE OSSEA

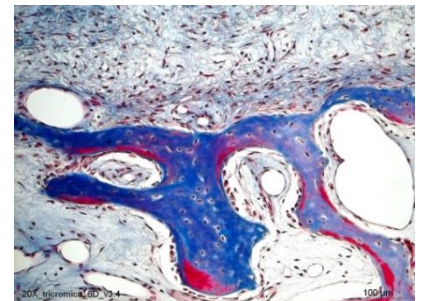
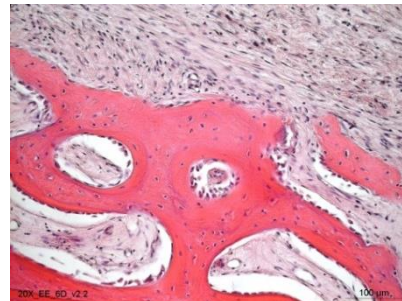
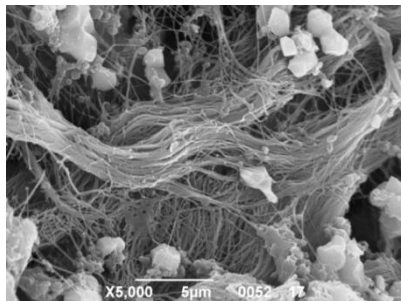
Sostituto osseo  
*naturale o sintetico*



*blocchetto*



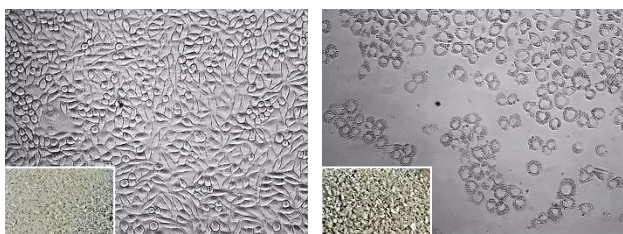
*granuli*



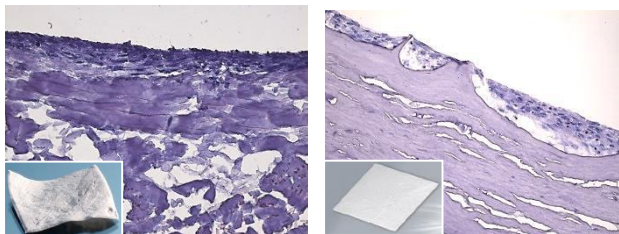
### ANALISI in vitro di MATERIALI per la MEDICINA RIGENERATIVA

✓ **Biocompatibilità** tramite saggi di vitalità cellulare e analisi istologiche

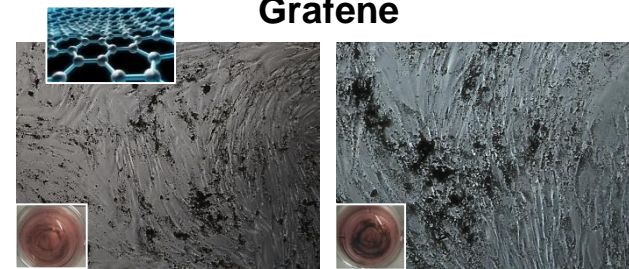
**Sostituto osseo**



**Membrana in Pericardio**

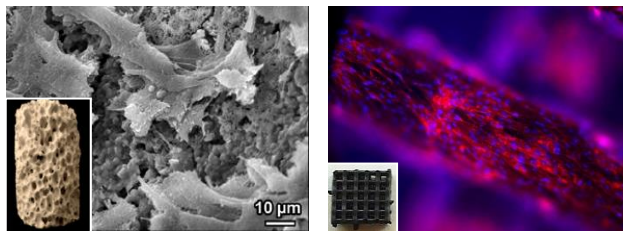


**Grafene**

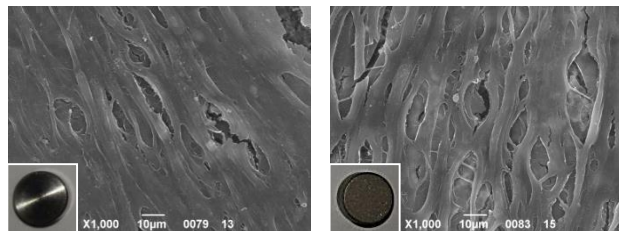


✓ **Morfologia cellulare** tramite microscopia elettronica a scansione, immunofluorescenza e analisi istologiche su tessuti molli o duri

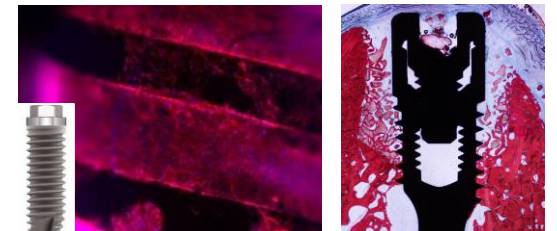
**Sostituti ossei** prodotti con stampante 3D



**Sostituti in Titanio**



**Impianti dentali in Titanio**



✓ **Osseointegrazione** mediante test biomeccanici

